

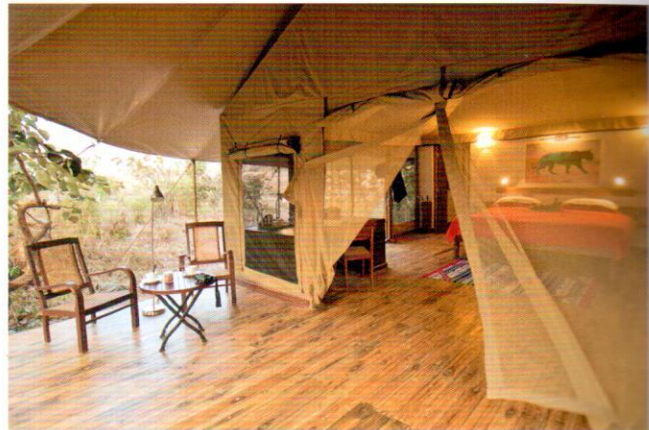
Jamtara Wilderness Camp, Pench

Famed for being the setting of Rudyard Kipling's enduring classic *The Jungle Book*, Pench National Reserve calls Madhya Pradesh, India its home. Dominated by forests, hills and valleys, the 757-sq.-km. park derives its name from the meandering Pench River and is one of India's richest, yet lesser-known parks. An archetypical teak jungle in Central India, it offers travellers some of the best wildlife viewing opportunities in the world.

Nestled in the heart of Pench, in Jamtara village, is a hidden gem called Jamtara Wilderness Camp. A truly luxurious retreat set in the idyllic Northern part of the National Park well into Madhya Pradesh; Jamtara Wilderness Camp affords a multihued jungle paradise. A pristine landlocked wilderness, vast and untamed, the camp offers unparalleled nature viewing for an extremely varied safari experience.

This 12 luxury tented property, surrounded by tall Arjuna trees and an ancient Banyan rooted on a dry river bed, is spread across a colossal four acres of unfenced land with a seasonal river running through. Offering verdant views and overlooking the buffer zone area and farmlands, it sets the backdrop for a perfect jungle experience for nature lovers. It is the only lodge located near the National Park entrance, giving travellers an exclusive access to the park via Jamtara gate that is merely two minutes away from the camp, making exclusivity to one end of the park unrivalled. The tents are decorated in a colonial safari-style, which come complete with every luxury amenity as a standard kit such as en-suite bathrooms and private verandas. Jamtara Wilderness Camp also features a cosy library, an inviting pool and the gazebo that allows one to dine indoors or *al fresco*.

Along with the usual early morning and evening safari, the lodge offers guests a unique and exclusive experience of



sleeping under the stars. In keeping its efforts to support farmers, Jamtara Wilderness Camp offers an innovative concept of 'Machaan' night to guests, where a *machaan* on the farmer's land can be booked for a night under the stars, with majority of the revenue generated given back to the farmer. One also has an option to sleep on the patio with mosquito netting. RARE's latest lodge in Pench, Jamtara Wilderness Camp is the perfect getaway with unobtrusive luxury. ♦

